

Application and information For calibration tape head azimuth 7 ½ ips

Caution: listen only to a moderately low audio level – a too high level may cause damage to your sense of hearing!!

General tips for handling of tapes:

- Careful handling prolongs life duration of the tape.
- Control first the correct function of tape drive mechanics before applying a a test tape (tape tension and wind torque).
- Important: always degauss the tape heads and tape guides before using a tape!
- Store your tapes in played state ("tail out" position), don't reel them back, keep clear of magnetic fields, (transformers, loudspeakers, etc.)
- Use degaussed or unmagnetic tools for working.

This tape (7 ½ ips) has:

1. track: 1 kHz -10 dB 60 sec. for coarse playbacklevel-adjustment
2. track: 3 kHz -10 dB 25 sec.
3. track: 5 kHz -10 dB 25 sec.
4. track: 10 kHz -10 dB 120 sec. for finest adjustment of lissajaous figures on scope
5. track: 4-frequency-signal 120 sec. for using with PC-spectrum analyser

Preparations:

1. Clean the tape path of your tape recorder, clean the heads, the tape guides, the Capstan shaft and – very important – the pinchroller.
Don't use any force, danger of ruining the azimuth!
I use a Q-tip (dipped in spirit) for cleaning the tape path- (it can be bent to reach hidden parts easier)

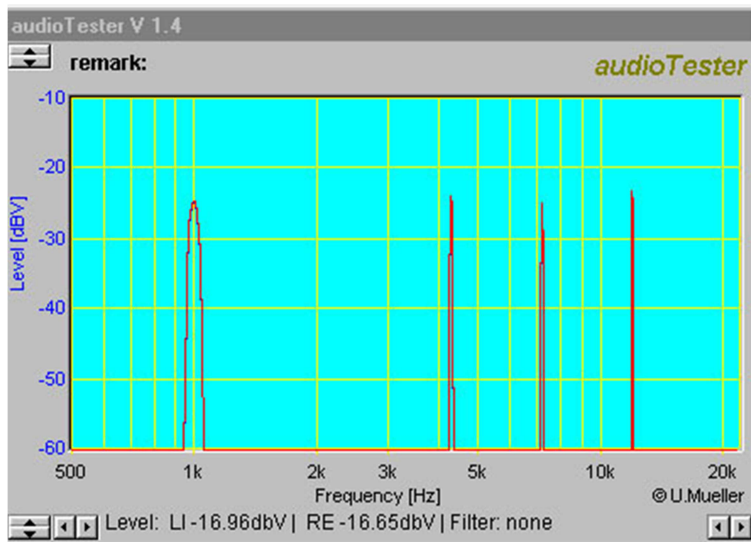
Wipe resisting sediments using a soft cloth (lightly wetted with spirit).

2. Let the machine warm up. The settings will be more exact.
3. Wind up the head azimuth calibration tape together with an almost full reel tape when using large reels, (Ø 18 -26,5 cm).

Using this tape with a PC based spectrum analyser I.E. Audiotester – any other program is o.k. too:



Set analyser parameters -for example Audiotester



The frequency spectrum looks as depicted if the adjustment is correct.
The tape deck is switched to "mono" !

Use Help of your software for further function/features e.g. measuring cursors in display screens.

Lissajou's - figure:



In this screenshot Lissajou's figure is shown if the playback head is accidentally to a false maximum. With this tape it is easy to calibrate the playback head to it's main correct position without mistake.